

Series Number:

4790

Type:
Micro

Stand:
Bench Top

Mounting Style:
**Moveable or
Fixed Head**

Sizes, mL:
25, 50, 100

Standard Pressure
MAWP Rating, psi (bar):
3000 (200)

High Pressure (HP)
MAWP Rating, psi (bar):
5000 (345)

Standard Maximum
Operating Temp., °C:
225 w/ FKM O-ring
300 w/ FFKM O-ring
350 w/ PTFE Flat Gasket

High Temperature (HT) /
High Pressure (HP)
Maximum Operating
Temperature, °C:
500 w/ FG Flat Gasket
(Fixed Head Only)

Series 4790 Pressure Vessels, 25-100 mL

These small pressure vessels are a good choice for chemists working with very expensive materials or materials only available in small amounts. They will also appeal to users who wish to minimize the risks associated with hazardous materials or reactions by restricting the reactants or products to a minimum. Use of the Series 4790 Vessels also helps minimize the quantities of waste products which may require special disposal procedures. The 4790 Vessels are now available in high pressure (5000 psi) or high pressure/high temperature (500 °C) versions.

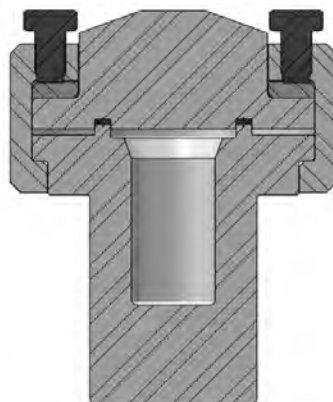
These micro vessels have been designed to provide as many of the features of the larger vessels as possible in the limited space available. The standard head fittings include a gage, rupture disc, thermocouple, and valves. Optional cooling is available with aluminum block heaters with cooling capability, welded jackets, or cold fingers.

The vessels are offered in both fixed head and moveable head vessel styles with choices of a self sealing O-ring for temperatures up to 225 °C or with FFKM O-ring for temperatures to 300 °C or with a flat PTFE flat gasket for temperatures to 350 °C, or with an FG Flexible Graphite gasket for temperatures to 500 °C with the HP/HT option (for fixed head versions only). A split ring closure is standard.

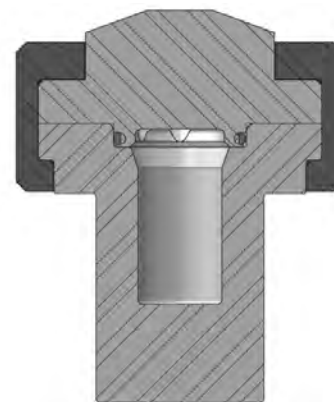
All three volumes use the same bench top ceramic fiber heater.

These micro vessels can be easily converted from one size to another by simply substituting a larger or smaller cylinder and the corresponding internal fittings.

The support system can also be readily adapted to accept any of the vessels from the 4790 Series Vessels. The opportunity to modify these small reactors is restricted because of the limited head space available.



4790-25mL Cross Section
with Flat Gasket Seal



4790-25mL Cross Section
with O-ring Seal



4790-100mL-VGR-DVD Moveable Head Vessel with PTFE Flat Gasket

4790

Series 4790 Pressure Vessel Specifications			
Shaded bar indicates specifications that change within series.			
Model Number	4790		
Approximate Volume, mL	25	50	100
Maximum Pressure (MAWP)			
Standard Rating	3000 psi (207 bar, 200 bar for CE orders)		
High Pressure (HP)	5000 psi (345 bar)		
High Pressure/High Temperature (HP/HT)	5000 psi (345 bar)		
Maximum Temperature			
with FKM O-ring	225 °C		
with FFKM O-ring	300 °C		
with PTFE Flat Gasket	350 °C		
with Flexible Graphite Flat Gasket (HP/HT only)	500 °C		
Vessel Details			
Mounting Style	Moveable or Fixed Head (HP/HT option requires Fixed Head)		
Closure	Split-Ring (6 Compression Bolts for Flat Gasket, no Compression Bolts for O-ring) or Screw Cap (O-ring seal only)		
Head Opening Options	One head opening (1/8" NPT*, 1/4" NPT*, "A" socket, or rupture disc assembly port) Ports for valve, gage, rupture disc, and thermocouple (VGR**) Custom port option (Contact our technical sales department to discuss options)		
Maximum Head Openings	5 (Dependent on opening size, and required fittings)		
Valve Connections	1/8" NPT Male (standard rating), 1/4" NPT Male (HP), 1/4" NPT Female (HP/HT)		
Pressure Gage, Size	3.5 inches		
Range, Standard Temperature	0-3000 psi (207 bar)		
Range, HP & HP/HT	0-5000 psi (345 bar)		
Temperature Measurement	Fixed Thermocouple (Thermowell for special alloys)		
Cooling (optional)	Cold Finger		
* NPT ports are not available for vessels with a High Temperature (HT) rating. ** 4790HPHT requires VGR.			
Stand and Heater (optional)			
Stand Type	Heater Only (standard rated and HP vessels only) and Bench Top Stand with Heater (required for HT vessels)		
Heater Style (Standard rating & HP)	Ceramic Fiber Heater		
Heater Power, Watts	700	700	350
Maximum Load, amps, 115V / 230V	6 / 3	6 / 3	3 / 2
Heater Style (HP/HT)	Ceramic Fiber Heater		
Heater Power, Watts	700		
Maximum Load, amps, 115V / 230V	6 / 3		
Weight and Dimensions			
Cylinder I.D. x Depth, inches	1.0 x 2.0	1.3 x 2.3	1.3 x 4.6
Vessel Assembly w/ Moveable Head, Weight, pounds**	16	15	16
Vessel Assembly w/ Fixed Head, Weight, pounds**	17	17	18
Cylinder Weight, pounds	3.5	3.1	4.2
** Vessel Assembly weight varies based on head configuration choice and fitting options. Weights shown are based on vessels with valve, gage, rupture disc, thermocouple, and double valve assembly.			
Other options available. See Ordering Guide, visit www.parrinst.com , or call for more information.			

Series 4790 Pressure Vessel Systems

Index to Options

Option	Page
Certification	8
Materials of Construction	10
Magnetic Drive	14
Gaskets & Seals	18
Stirrer Motor	118
Rupture Disc	124
Pressure Gage	125
Cooling Coil	129
Bottom Drain Valve	131
4848 Reactor Controller	102
4871 Process Controller	109
A2110E Motor Controller	114

Custom Option	Page
Stirrers	120
Heaters	116
External Valves & Fittings	138
Solids Charging Ports	128
Condensers	123
Electrical Glands	137
Catalyst Addition Device	128
Catalyst Baskets	122
Relief Valves	125
Windows	136
Gear Drives	119
Explosion Proof Options	134
Liquid Sampling	130

Accessories	Page
Liners	129
Spare Parts Kits	137
Pressure Hoses	133
Check Valves	125
Liquid Pipettes	127
Gas Burettes	126

Model 4790-25mL Vessel
w/ Double Valve Assembly



4790-100mL-HP/HT Fixed Head Vessel

Series 4790 Ordering Guide

An example order number for a vessel in this series is: **4790-25mL-T-SS-3000**

A composite identification number to be used when ordering a 4790 Series Pressure Vessel System can be developed by combining individual symbols from the separate sections below. For more information on how to use this ordering guide, please see page 27.

A Vessel Volume

-No Symbol	3000 psi / 207 bar, 200 bar for CE orders @ 350 °C
-HP	5000 psi / 345 bar @ 350 °C
-HPHT	5000 psi / 345 bar @ 350 °C

B Vessel Volume

-25mL	25 mL, 1" ID
-50mL	50 mL, 1.3" ID
-100mL	100 mL, 1.3" ID

C Head Mounting Style

-No Symbol	Moveable Head (Standard configuration)
-FH	Fixed Head (Required for HP/HT rating)

D Gasket / Maximum Temperature

-T	PTFE Flat Gasket, 350 °C
-OV	FKM O-ring, 225 °C
-OK	FFKM O-ring, 300 °C
-FG	Flexible Graphite Flat Gasket, 500 °C (HPHT option only)

E Materials of Construction

-SS	T316 Stainless Steel
-C20	Alloy 20*
-M0	Alloy 400*
-IN600	Alloy 600
-IN625	Alloy 625
-HB	Alloy B-2 / B-3*
-HC	Alloy C-276
-NI	Nickel 200
-TI2	Titanium Grade 2*
-TI4	Titanium Grade 4*
-ZR702	Zirconium Grade 702*
-ZR705	Zirconium Grade 705*

* High temperature option not available.
See page 10 or 24 for complete list of available alloys.

F Head Configuration

-RD	Rupture disc port with rupture disc assembly & disc
-1/8	One head opening, 1/8" NPT port, plugged
-1/4	One head opening, 1/4" NPT port, plugged
-A	One head opening, "A" socket
-VGR	Valve on gage adapter, pressure gage, rupture disc assembly, & thermocouple (includes thermowell for special alloys)
-NS	Non-standard, custom head opening

G Optional Fittings & Custom Options (Check all needed)

-VD	Single Valve on head with dip tube (VGR Required)
-DVD	Double Valve Assembly on head with dip tube (VGR Required)
-CF	Cold Finger
-4310A	Gage Block Assembly (for head with "A" socket opening)
-CAD	Internal Catalyst Addition Device
-XCAD	External Catalyst Addition Device
-SCP	Solids Charging Port (Ball Valve)
-RC	Reflux Condenser
-RTC	Reflux/Take-Off Condenser
-WJ	Welded Jacket

H Pressure Gage

-No Symbol	Single Valve on head with dip tube (VGR Required)
-5000	5000 psi / 345 bar
-3000	3000 psi / 207 bar
-2000	2000 psi / 138 bar
-1000	1000 psi / 69 bar
-600	600 psi / 40 bar
-200	200 psi / 14 bar
-100	100 psi / 7 bar

I Stand and Heater Options

-No Symbol	None
-NS	Heater only, no stand (Temperatures up to 350 °C)
-BTS	Bench Top Stand with Heater

See Section "G" for Welded Jacket option

J Controller

-4838	PID Control, Ramp & Soak Programming, and Data logging with Software (RS-485 to USB cable not included). For use with one additional display module.
-4848	PID Control, Ramp & Soak Programming, and Data logging with Software. (RS-485 to USB cable not included). For use with up to three additional display modules.

See Chapter 6 for complete list of Controller options.

K Controller Options (Check all needed)

-PDM	Pressure Display Module
-HTM	High Temperature Cut Off Module
-ETLM	External Temperature Limit Module
-SVM	Solenoid Valve Module (for cooling control)
-A1925E4	RS-485 to USB Cable for 4838/4848 Controller (required for data logging)
-A1925E6	RS-485 to USB Converter, isolated, 30-ft
-A2208E	RS-485 Daisy Chain for Multiple Controllers (Must be used with A1925E6)
-A3504HC	SpecView Software Package for 4838/4848 Controller

L Electrical Supply for Heater and/or Controller

-No Symbol	None
-115	115V Power
-230	230V Power

M Certifications

-No Symbol	No Certification
-ASME	ASME Documentation
-CE	CE Documentation
-P	Parr Certification

Please note that all options and combinations are not compatible with all models.